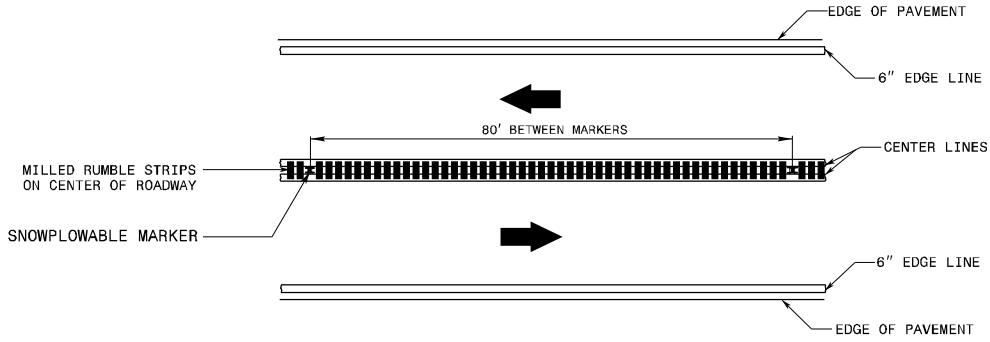


PROJECT REFERENCE NO.	SHEET NO.
SS-4913CC	
DOCUMENT NOT CONSIDERED FINAL UNLESS ALL SIGNATURES COMPLETED	

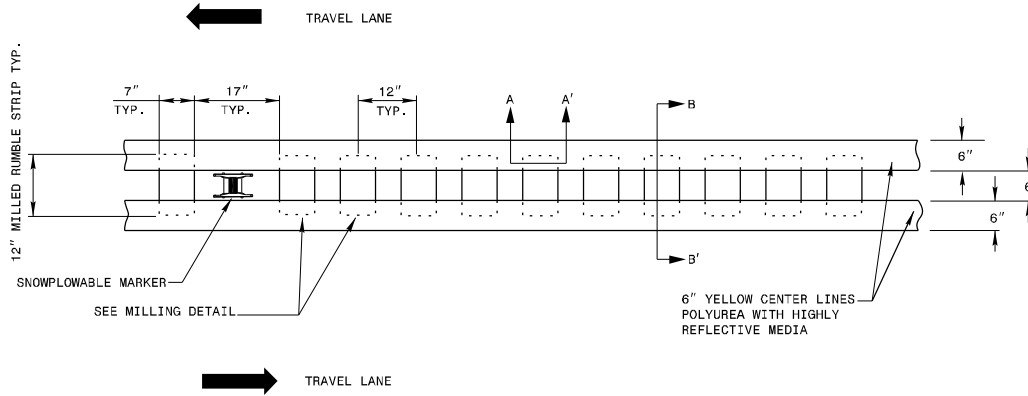
### LANE TREATMENT



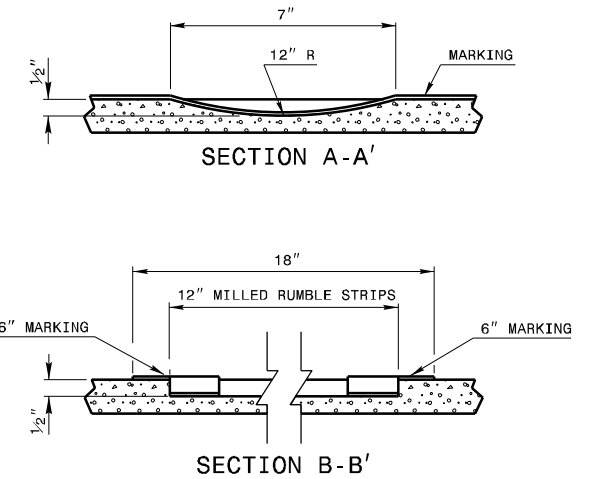
**NOTES:**

- 1) USING A VACUUM IN THE SAME OPERATION, REMOVE ALL DEBRIS FROM THE MILLINGS JUST PRIOR TO PLACING ANY PAVEMENT MARKINGS.
- 2) ENSURE GLASS BEADS AND HIGHLY REFLECTIVE MEDIA ARE SPREAD UNIFORMLY OVER THE ENTIRE SURFACE OF THE PAVEMENT MARKINGS.
- 3) EXISTING SNOWPLOWABLE MARKERS ARE INSTALLED ON APPROXIMATELY 80' INCREMENTS. DO NOT MILL RUMBLE STRIPS IN SECTION WHERE RAISED MARKERS ARE INSTALLED.

### CENTER LINE



### MILLING/MARKING DETAILS



**CENTER LINE  
RUMBLE STRIPE**